



Empower your pneumatic actuators!

Pneumatic actuators have traditionally only been used for movements between two fixed stops, and electric actuators have been necessary as soon as you need flexibility in stroke or multiple stops.

With Staccatos' Positioning unit, you get all the advantages of both pneumatic actuators and electrical actuators.

Flexible–Simple–Cost effective



Digital Pneumatics

Accurate Positioning made possible
with Staccato valve technology



STACCATO
TECHNOLOGIES



Who are we?

Staccato technologies started producing pneumatic valves 1994. In 2004, we developed the revolutionary staccato valve, originally for automotive applications, where we needed response times down to 1ms in harsh environments.

After this, we also adapted the valve for the long life times necessary in textile applications, and we now have life expectancy in excess of 1Bn cycles.

In 2018, with our valves as core enabler, we developed the positioning unit. You can now control a pneumatic actuator as well as a traditional AC-Servo. But at a much more attractive total cost.

The principle

The staccato valve has three patents that enable the fast activation of the valve and the high flow. The total package include advanced control electronics and dedicated software. You as a user only need to consider your required position.

"I was blown away!" – Satisfied customer

"True plug and play!" – Satisfied user

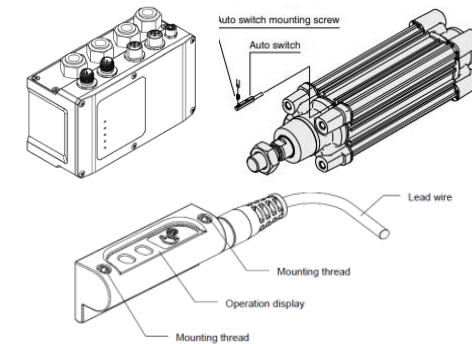
Advanced positioning

- Position control down to +/-0.1mm
- Speeds well in excess of 1m/s
- Special movement patterns

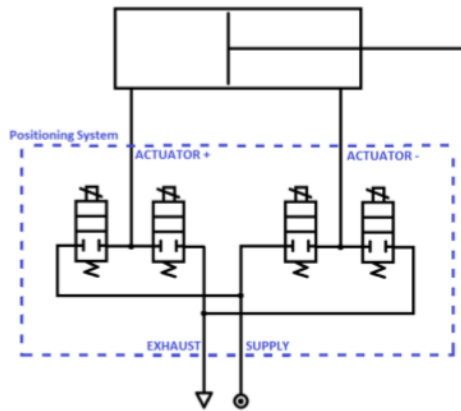
Our positioning unit is also used for control of pneumatic grippers and rotary actuators.

Simple control

Three pcs. make up the system: Your pneumatic actuator, a position sensor and the positioning unit



Advanced positioning



Order code

Valve orifice	
10	1.0 mm
15	1.5 mm
30	3.0 mm
40	4.0 mm
51	5.1 mm

Actuator type	
B	Basic
W	Double rod
R	Rodless

211 8200 - A - 30 - 40 B - 200

Actuator bore size [mm]	
25	25 mm
32	32 mm
40	40 mm
50	50 mm
63	63 mm
125	125 mm
200	200 mm

Actuator stroke [mm]	
25	25 mm
50	50 mm
100	100 mm
200	200 mm
250	250 mm



Contact

Shelley Automation Offices
 41 Coldwater Rd, Toronto, ON M3B 1Y8
 2-290 Thompson Dr, Cambridge, ON N1T 2E3
 140-55 Edinborough St, Windsor, ON N8X 3C3
 112-7350 72nd St, Delta, BC V4G 1H9

simab.khan@shelley.com
 1-877-SHELLEY

www.shelley.com/pneumatics/