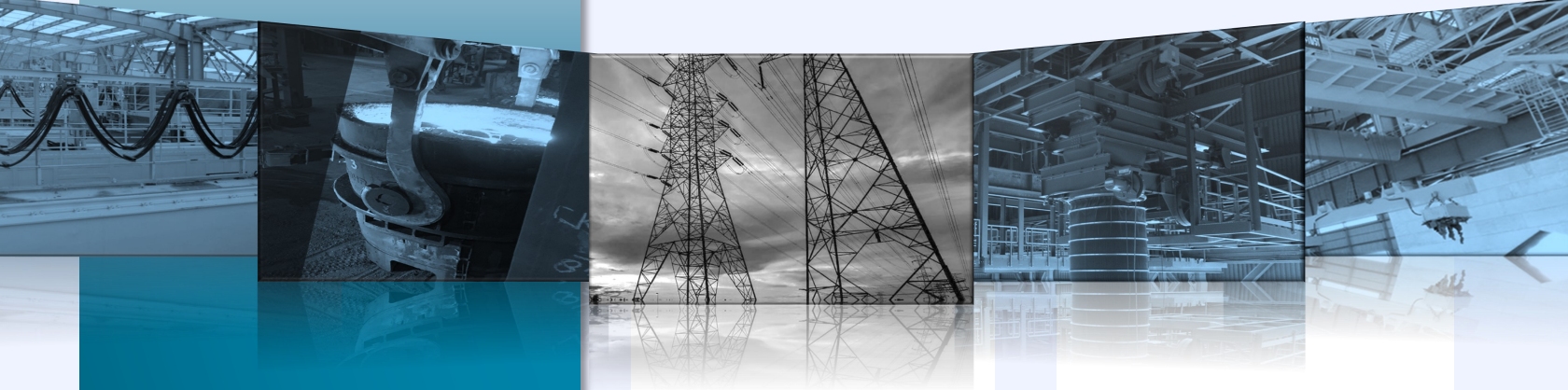


## INDUSTRIAL CONTROLS DIVISION



### MISSION STATEMENT

Our mission is to build long-term partnerships with our customers. Working together, we ensure tomorrow's increasing demand for performance and quality.

### CONTACT

#### Inside Sales

*Technical Product Specialist*

Name: Peter Nuttall

Phone: 1-800-SHELLEY

E-mail: [peter.nuttall@shelley.com](mailto:peter.nuttall@shelley.com)

Web: [www.shelley.com](http://www.shelley.com)

#### Manufacturer's Agent

Name: Rob Currie

Phone: 416-580-3487

E-mail: [rcurrie5@cogeco.ca](mailto:rcurrie5@cogeco.ca)



- ◆ High Current High Voltage DC contactors
- ◆ AC & DC Crane Controls
- ◆ Lifting Magnet Controllers
- ◆ Pendant stations
- ◆ AC&DC Man-Mag Disconnect Switches
- ◆ PLS
- ◆ Pressure Switches



The Electric Controller and  
Manufacturing Company, LLC

Formerly



DC Control

- ◆ DC & AC Crane Control
- ◆ DC & AC Line Arc Contactors
- ◆ Brakes
- ◆ Power Limit Switches
- ◆ Lifting Magnet Controllers
- ◆ Resistors
- ◆ Motor starters



- ◆ Cable&Hose reels
- ◆ Festoon Systems
- ◆ PowerTrak carriers
- ◆ Conductor Bars
- ◆ Slip Rings
- ◆ Rotary Limit Switches
- ◆ Workplace solutions

## Cableform

- ◆ DC Motor Traction Controls
- ◆ Digital DC Crane Hoist & Travel Controls
- ◆ Digital DC Optimizer Lifting Magnet Controls
- ◆ DC Motor Soft Starts
- ◆ Battery Chargers & Other Mining Controls